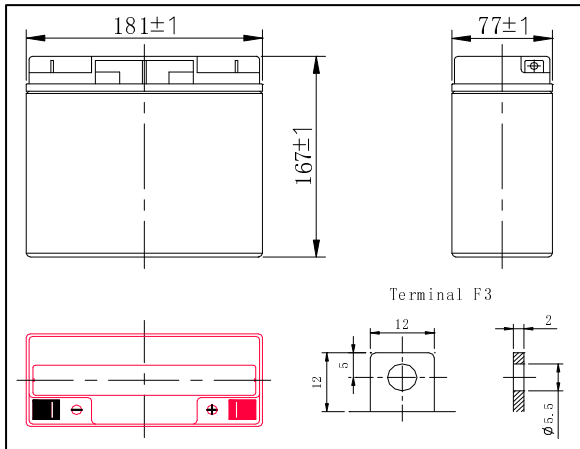
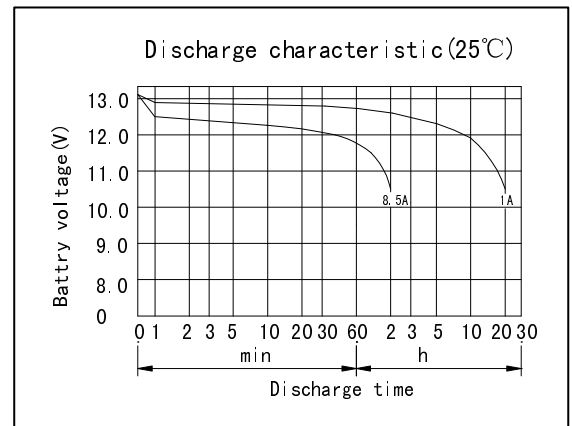


Battery Dimensions



SPECIFICATION

Nominal voltage	12V	
Rated capacity (2 hour rate)	17Ah	
Number of cell	6	
Approx. Weight (Kg)	5.9	
Dimensions	Total Height	6.61inches(167mm)
	Height	6.61inches(167mm)
	Length	7.13inches(181mm)
	Width	3.03inches(77mm)



Characteristics

Capacity 77° F (25°C)	20 hour rate (1A、10.5V)	20Ah
	2 hour rate (8.5A、10.5V)	17Ah
Internal Resistance	Full charged Battery 77° F (25°C) : 15mΩ	
Operating Temperature Range	Discharge: -20~60°C	
	Charge: -10~60°C	
	Storage: -20~60°C	
Self-Discharge 3% of capacity declined per month at 20°C(average)		
Max. discharge current 77° F (25°C) : 170A(5S)		
Charge (Constant Voltage)	Float: 13.6~13.8 V/77° F(25°C)	
	Cycle: 14.5~14.9 V/77° F(25°C) Max. Current: 4.3A	

