



# UNLG600-2 (2V600Ah/10hr)



UNLG Series is GEL battery which is manufactured with AGM separator and colloidal Silicon. Gel battery are featured with low self-discharge, strong ability to recover from deep discharging, excellent cycle life and performance at cold ambient temperatures than conventional VRLA

## Battery Construction

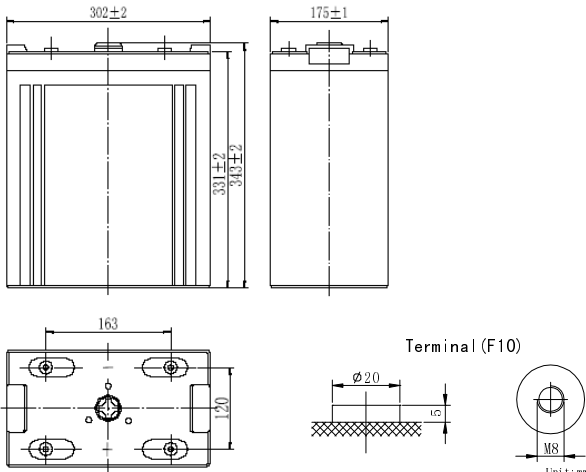
Component	Positive plate	Negative plate	Container	Cover	Safety valve	Terminal	Separator	Electrolyte
Raw material	Lead dioxide	Lead	ABS	ABS	Rubber	Copper	Fiberglass	Colloidal silicon

## General Feature

- Micro millimeter SiO<sub>2</sub> and H<sub>2</sub>SO<sub>4</sub> technology for Efficient gas recombination of up to 99% and Freedom from electrolyte maintenance or water adding.
- Not restricted for air transport-complies with IATA/ICAO Special Provision A67.
- UL-recognized component.
- Can be mounted in any orientation.
- Computer designed lead, calcium tin alloy grid for high power density.
- Long service life, float or cyclic applications.
- Maintenance-free operation.
- Low self discharge.

## SPECIFICATION

Nominal voltage ..... 2V  
 Number of cell ..... 1  
 Length(mm/inch) ..... 302/11.9  
 Width(mm/inch) ..... 175/6.89  
 Height(mm/inch) ..... 330/13.0  
 Total Height(mm/inch) ..... 367/14.4  
 Approx. Weight (kg/lbs) ..... 38.5/84.9



## Performance Characteristics

Capacity 77°F(25°C)	100 hour rate (7.2A、1.85V)	720Ah
	20 hour rate (31.5A、1.8V)	630Ah
	10 hour rate (60A、1.8V)	600Ah
	1 hour rate (353A、1.6V)	353Ah
Internal Resistance	Full charged Battery 77°F(25°C): 0.6mΩ	
Operating Temperature Range	Discharge: -20~60°C	
	Charge: -10~60°C	
	Storage: -20~60°C	
Self-Discharge 3% of capacity declined per month at 20°C(average)		
Max. discharge current 77°F(25°C): 2000A(5S)		
Charge (Constant Voltage)	Float: 2.23~2.28 V/77° F(25°C)	
	Cycle: 2.38~2.42 V/77°F(25°C) Max. Current: 120A	

Discharge Constant Current (Amperes at 77° F 25 °C)

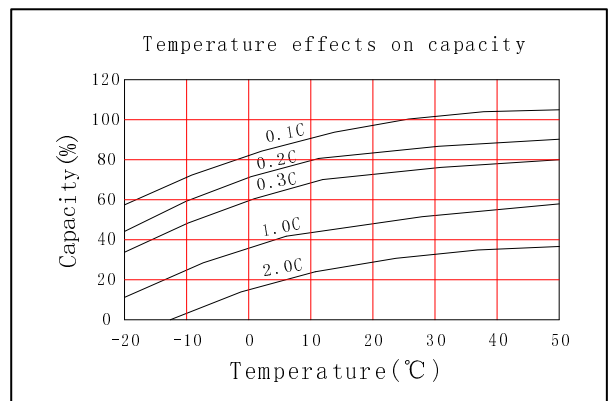
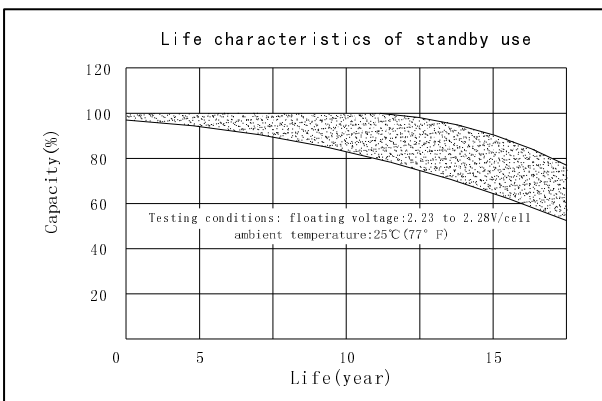
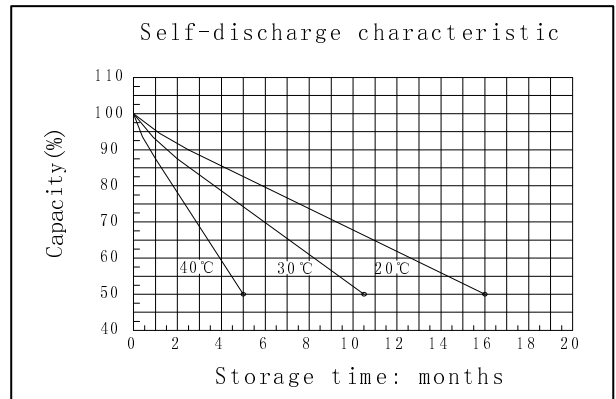
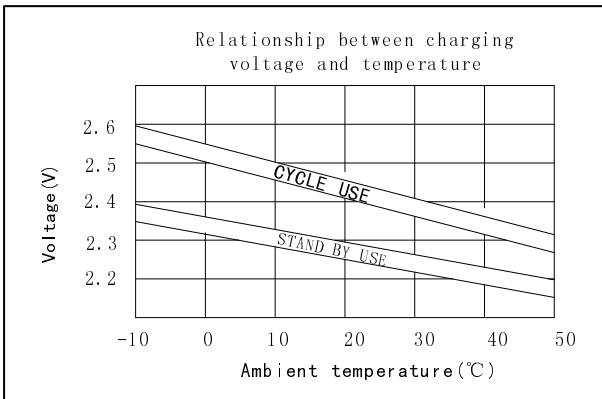
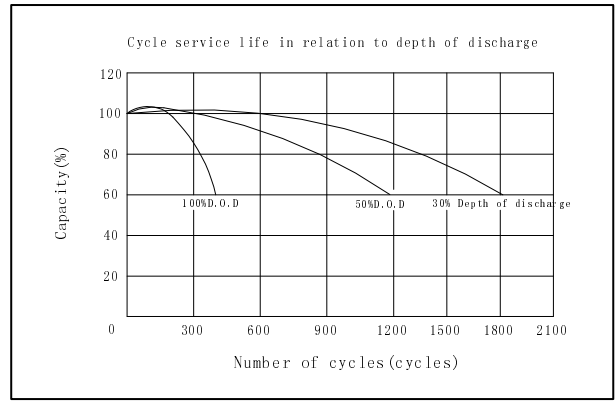
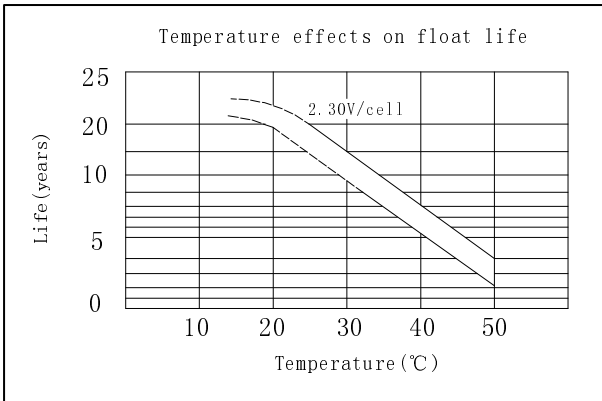
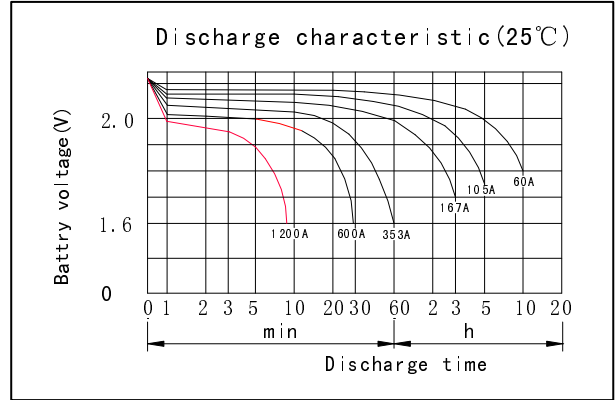
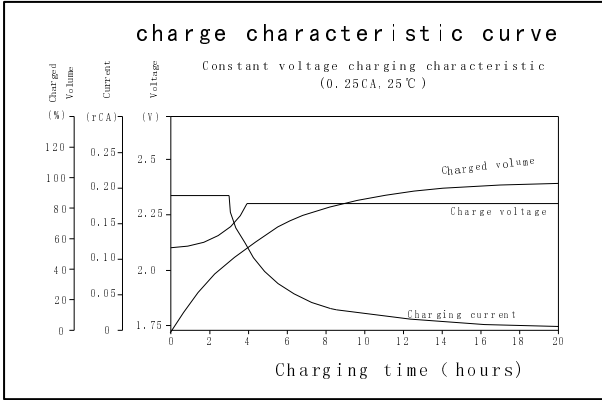
End Point Volts/Cell	5min	10min	15min	30min	45min	1h	3h	5h	10h
1.60V		1097	841	591	460	353	176	112	63.0
1.65V		1040	799	564	442	340	172	110	62.5
1.70V		981	757	538	422	327	167	108	61.8
1.75V		921	714	509	399	312	160	105	61.0
1.80V		859	672	480	379	298	153	102	60.0

Discharge Constant Power (watts at 77° F 25 °C)

End Point Volts/Cell	5min	10min	15min	30min	45min	1h	2h	3h	5h
1.60V		1815	1353	1078	869	689	469	351	223
1.65V		1710	1280	1024	829	660	458	342	220
1.70V		1604	1206	969	787	630	446	333	216
1.75V		1498	1131	913	745	598	433	323	212
1.80V		1394	1056	856	702	566	405	303	209

(Note) The above characteristics data are average values obtained within three charge/discharge cycles not the minimum values.

Total height with removable cover: 367



**DONGGUAN OREMA POWER CO., LTD**

Add: #1 Qilinling Road Shahu, Tangxia Town, Dongguan Guangdong China

TEL: +86-769- 3896 1163 +86-769- 3896 1168

FAX: +86-769- 3896 1169



[www.oremabattery.com](http://www.oremabattery.com)